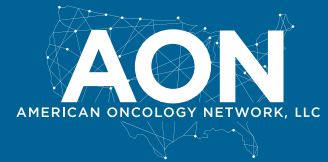


IMPRESSIVE RESULTS WITH THE ONCOLOGY CARE MODEL (OCM)

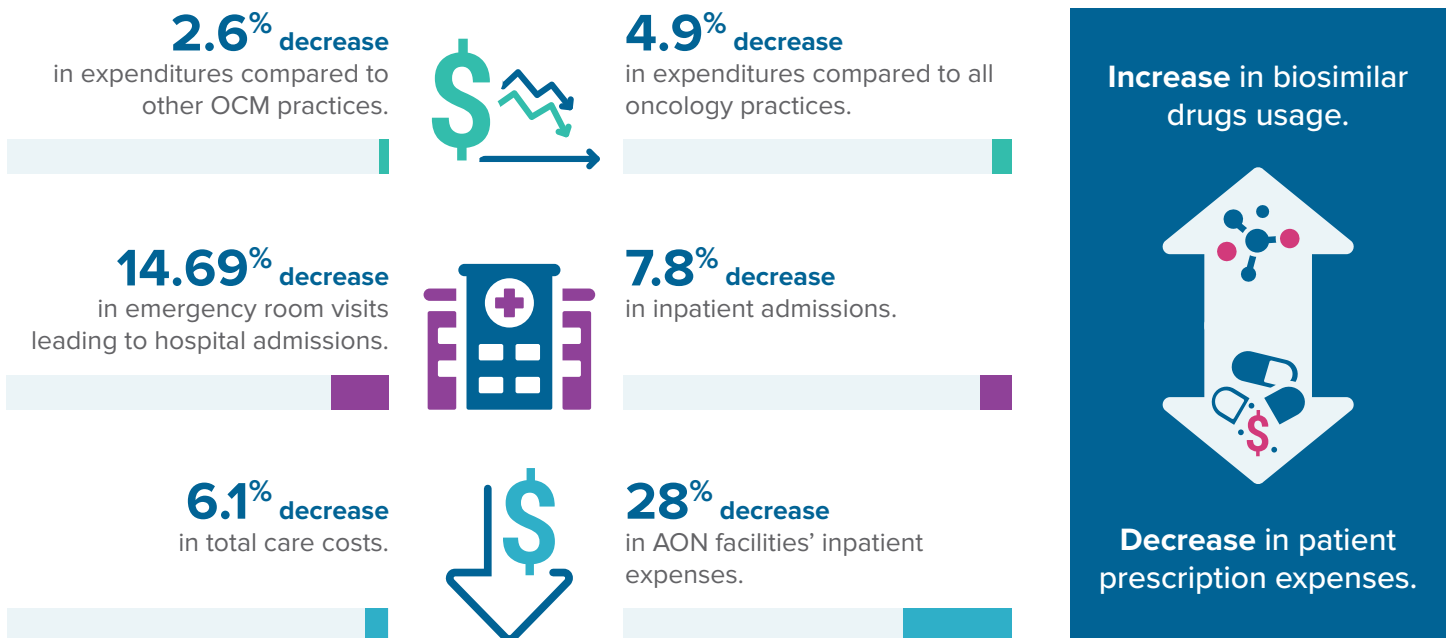


American Oncology Network (AON) at the Forefront of Patient-Centered Cancer Care

19 AON community oncology clinics were accepted to participate in the OCM. It was implemented through AON's value-based Care Management Program.

SUCCESSSES

AON practices reported **OCM quality scores exceeding 90%**.



“The program allowed our physicians to deliver better care and services at decreased costs to our Medicare beneficiaries.”

Dr. Stephen “Fred” Divers

AON Chief Medical Officer and Medical Oncologist at Genesis Cancer and Blood Institute



WHAT'S NEXT

AON's new program continues to build value-based care.

Value-based care is essential. AON's Principal Care Management Program builds upon the OCM to ensure practices are delivering the same patient-centered and quality of care and processes.